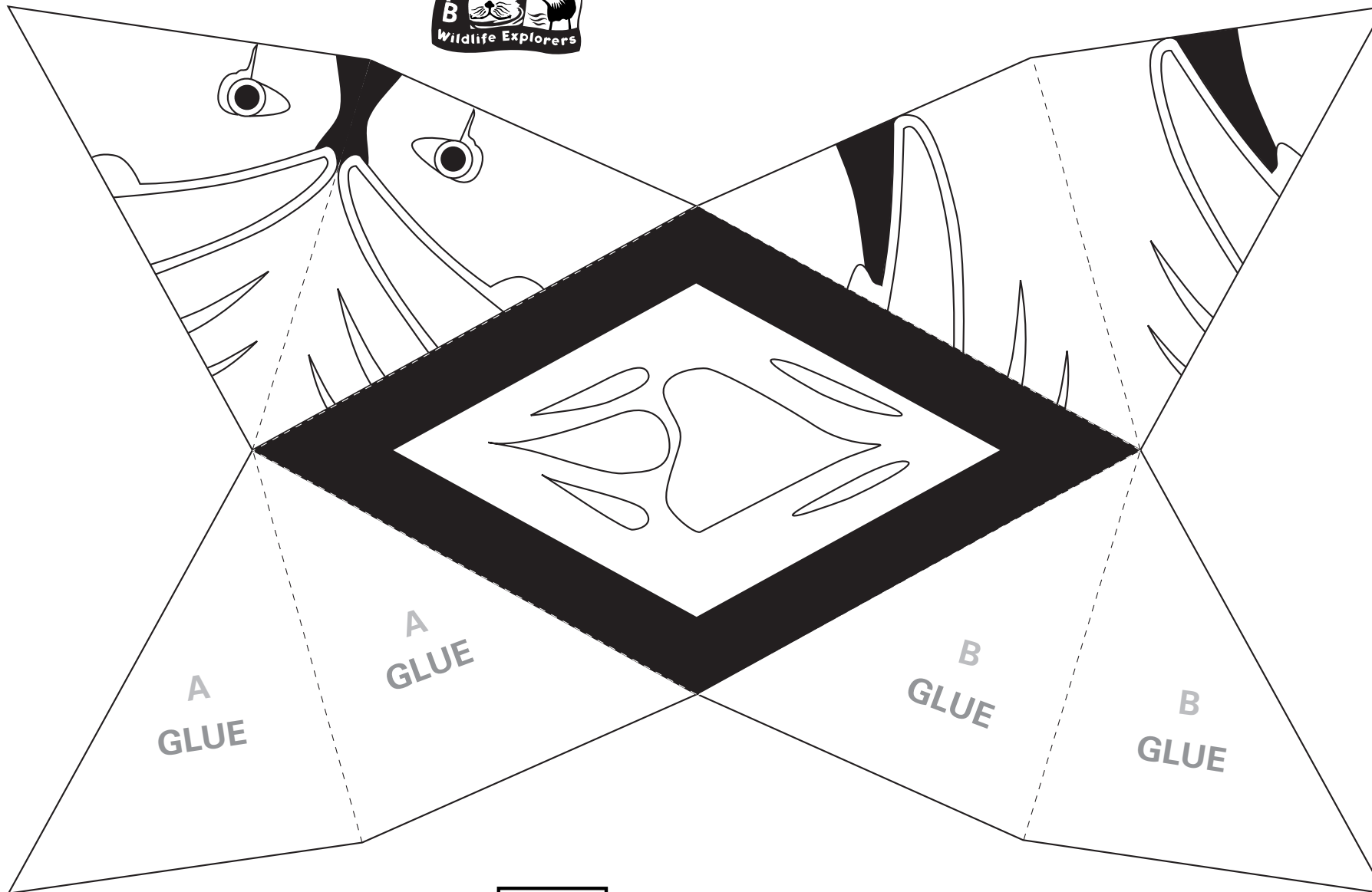




Puffin snapper



You will need:

- scissors
- glue
- black, red, orange, yellow and dark blue colouring pencils
- double-sided tape

What to do:

- Colour the circle around the eye red and the shape around the eye blue. Leave the cheeks white. Colour all the smallest stripes on the beak yellow starting with the one next to the white cheeks. Colour the next stripe blue and the rest of the beak red. Colour in the bottom half of the beak to match the top. Colour in the mouth yellow.
- Cut out all around the outside of the puffin snapper.
- Fold the snapper along the dotted lines with the coloured area facing outwards. Make sure you fold across the middle of the beak too.
- Apply glue as marked. Match A and B glued sections under the head and beak, squeezing to stick in place.
- Inside the top and bottom halves of the beak where circles are marked, stick a little piece of double sided tape. Put your fingers on the tape and start snapping.



RSPB Wildlife Explorers
is the junior membership of
the Royal Society for the
Protection of Birds

Regd charity no 207076 331-1192-05-06

Puffin
Most of the year puffins live out at sea. You can see them on cliff tops from March to August where they come to nest. With their colourful beaks, puffins are sometimes called the clowns of the sea.

www.rspb.org.uk/youth
RSPB Wildlife Explorers is
the junior membership of
the Royal Society for the
Protection of Birds.
331-1192-05-06
Registered charity no 207076

