



a million voices for nature

The Clocaenog Statement of Environmental Masterplanning Principles (SEMP)



Cotton Grass, rspb-images.com

www.rspb.org.uk/wales

Plu'r Gweunydd, rspb-images.com



miliwn o leisiau dros fyd natur

Datganiad o Egwyddorion Meistrgyllunio Amgylcheddol (DEMA) Clocaenog

www.rspb.org.uk/cymru

Yng Nghymru, rheolir lleoliad gofodol datblygiad ffermydd gwynt ar y tir gan arweiniad a fynegir yn ofodol, a amlinellir yn Nodyn Cyngori Technegol 8, ("Cynllunio ac Ynni Adnewyddadwy"). Mae NCT 8 yn sefydlu safon parhau, a elwir yn Ardaloedd Chwiliad Strategol (ACHS), ac o fewn y rhain mae rhagdybiaeth cyffredinol o blaid datblygiad ffermydd gwynt ar y tir. Mae hefyd yn sefydlu'r angen i ddatblygwyr ac awdurdodau cynllunio lleol "fanteisio ar gyfleoedd" i reoli tir er budd bioamrywiaeth, a'r angen iddynt fynd i'r afael ag agenda "Budd Cymunedol".

Saif ACHS A (Coedwig Clocaenog) ar y ffin rhwng Sir Ddinbych a Chonwy, gogledd ddwyrain Cymru. Mae RSPB Cymru wedi gweithredu project meistrngyllunio cynefin ar raddfa eang y ddau awdurdod lleol, sy'n sicrhau fframwaith gofodol i gynnal rheolaeth ac adferiad cynffwrdd lleol yr ACHS, ac i ddarparu arweiniad ynglŷn â'r lleoliadau mwyaf priodol ar gyfer lleoli Budd Cymunedol amgylcheddol.

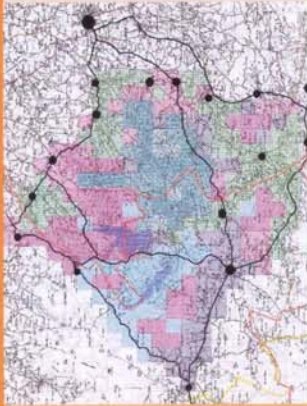


Corchwiglen, rspb-images.com

Byddai modd trosglwyddo'r egwyddorion a'r dulliau a ddefnyddir wrth gynhyrchu'r DEMA i'r chwech ACHS arall, ac i gyd-destunau eraill ledled Cymru lle mae pwysau gan ddatblygiad, ar amrywiaeth o raddau.

Mae'r Gymdeithas Frenhinol er Gwardio Adar (RSPB) yn elusen gofrestrig: Lloegr a Chymru rhif 207076, yr Alban rhif SC037654

Parthau Cymeriad Ecolegol



Mae'r DEMA yn enghraifft o gyfle i sicrhau mapio ecolegol, ac mae'n cydymffurfio gydag amcanion Cynlluniau Gweithredu Bioamrywiaeth Lleol Conwy a Sir Ddinbych.

Am ragor o wybodaeth cysylltwch os gwelwch yn dda â:
RSPB Cymru,
 Pencadlys Cymru, Tŷ Sutherland,
 Pontycastell,
 Heol Ddwyreiniol y Bont-faen,
 Caerdydd, CF11 9AB
 Ffôn: 029 2035 3000
 E-bost: cymru@rspb.org.uk

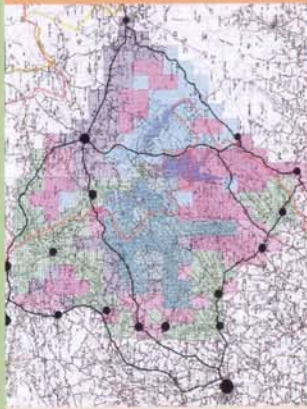


Grug, rspb-images.com

The SEMP takes the form of a map-based masterplanning statement, with accompanying text. It is a material consideration for the two local planning authorities when deciding upon windfarm applications in the SSA.

Curlew, rspb-images.com

Ecological Character Zones



The SEMP is an example of ecological opportunity mapping, and is in conformity with the objectives of the Conwy and Denbighshire LBAPs.

For further information please contact:

RSPB Cymru,
 Wales Headquarters,
 Sutherland House, Castlebridge,
 Cowbridge Road East,
 Cardiff, CF11 9AB
 Tel: 029 2035 3000
 E-mail: cymru@rspb.org.uk



Cross-leaved Heath, rspb-images.com

In Wales, the spatial location of onshore windfarm development is controlled by spatially expressed guidance, set out in Technical Advice Note 8, ("Planning and Renewable Energy"). TAN 8 establishes seven zones, called Strategic Search Areas (SSAs), within which there is a general presumption in favour of onshore windfarm development. It also establishes the need for developers and local planning authorities to "grasp opportunities" to manage land in the interests of biodiversity, and the need for them to address the agenda of "Community Benefit".

SSA A (Clocaenog Forest) straddles the border between Denbighshire and Conwy, Northeast Wales. RSPB Cymru has carried out a large-scale habitat masterplanning project for the two local authorities, which delivers a spatial framework to underpin habitat management and restoration throughout the SSA, and to provide guidance as to the most suitable locations for the deployment of environmental Community Benefit.

Lapwing, rspb-images.com

The principles and methods employed in producing the SEMP could be transferred to the other six SSAs, and to other contexts throughout Wales where there is development pressure, at a variety of scales.

The Royal Society for the Protection of Birds (RSPB) is a registered charity: England and Wales no 207076, Scotland no SC037654